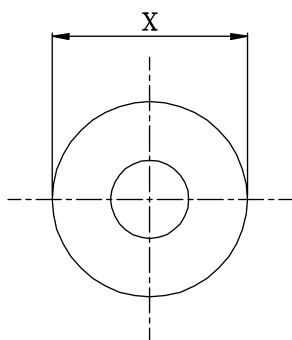
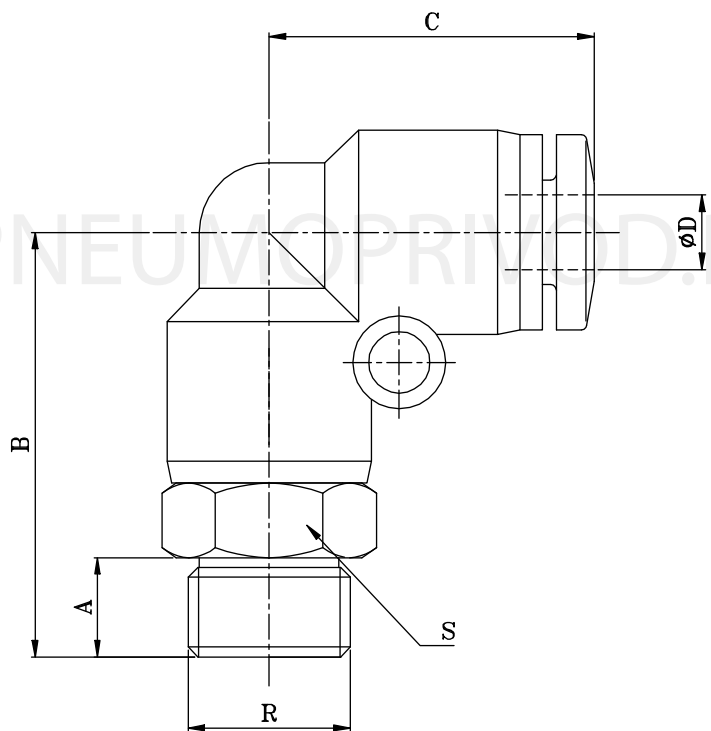


PNEUMOPRIVOD.RU



PNEUMOPRIVOD.RU

| МОДЕЛЬ    | D  | R    | A   | B    | C    | S  | X    |
|-----------|----|------|-----|------|------|----|------|
| EPL04-01G | 4  | G1/8 | 5   | 21.5 | 17.5 | 12 | 10.5 |
| EPL04-02G | 4  | G1/4 | 6.5 | 24   | 17.5 | 17 | 10.5 |
| EPL06-01G | 6  | G1/8 | 5   | 24   | 19.5 | 12 | 12.6 |
| EPL06-02G | 6  | G1/4 | 6.5 | 26   | 19.5 | 17 | 12.6 |
| EPL06-03G | 6  | G3/8 | 7   | 27   | 19.5 | 20 | 12.6 |
| EPL06-04G | 6  | G1/2 | 10  | 30.5 | 19.5 | 24 | 12.6 |
| EPL08-01G | 8  | G1/8 | 5   | 27   | 22.5 | 14 | 14.1 |
| EPL08-02G | 8  | G1/4 | 6.5 | 28.5 | 22.5 | 17 | 14.1 |
| EPL08-03G | 8  | G3/8 | 7   | 29.5 | 22.5 | 20 | 14.1 |
| EPL08-04G | 8  | G1/2 | 10  | 33   | 22.5 | 24 | 14.1 |
| EPL10-01G | 10 | G1/8 | 5   | 31.8 | 26.9 | 17 | 18.1 |
| EPL10-02G | 10 | G1/4 | 6.5 | 33.3 | 26.9 | 17 | 18.1 |
| EPL10-03G | 10 | G3/8 | 7   | 33.8 | 26.9 | 20 | 18.1 |
| EPL10-04G | 10 | G1/2 | 10  | 37.3 | 26.9 | 24 | 18.1 |
| EPL12-01G | 12 | G1/8 | 5   | 34.5 | 29.3 | 19 | 20.6 |
| EPL12-02G | 12 | G1/4 | 6.5 | 36   | 29.3 | 19 | 20.6 |
| EPL12-03G | 12 | G3/8 | 7   | 36.5 | 29.3 | 20 | 20.6 |
| EPL12-04G | 12 | G1/2 | 10  | 39.5 | 29.3 | 24 | 20.6 |